

Table of Contents

Date(s)	Title/Topic	Page #s
10/7	Sphero Programming - Slalom	24-25

Set up p. 24 for HW and p. 25 for notes

HW

24

Sphero Programming - Slalom

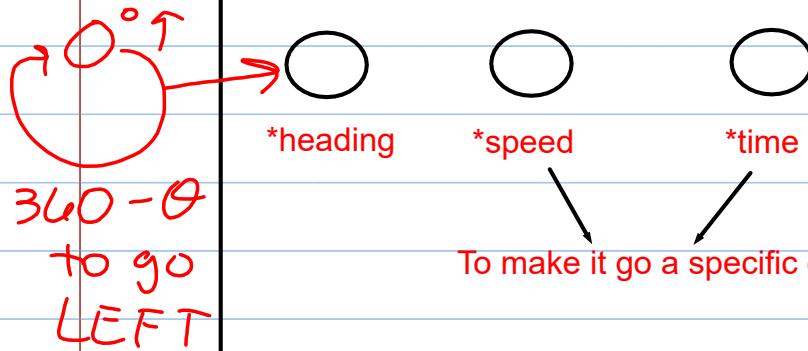
25

Sphero Programming - Slalom pg 25

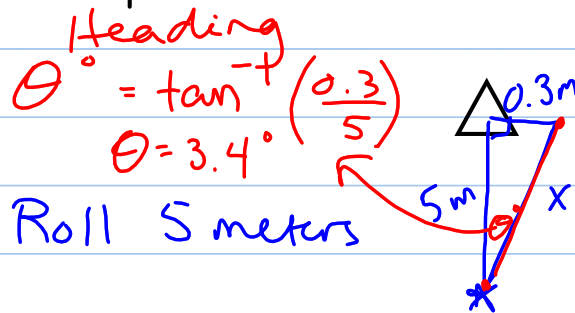
Ollie's: speed setting 50 ^{means 100 cm/s}
 go twice as fast in cm/sec.

Minis: speed setting 50 ^{means 25 cm/s}
 go 1/2 as fast in cm/sec

Spheros: speed setting 50 ^{means 50 cm/s}



Equal distance = ↑ speed ↓ time



Roll 5 meters

Distance

$$x^2 = 5^2 + 0.3^2$$

$$\sqrt{x^2} = \sqrt{25.09}$$

$$x = 5.0$$

5m = Rate · Time
 ↓ choice (math)

Distance = rate · time

$$\frac{500\text{cm}}{150\text{cm/s}} = \frac{150\text{cm/s}}{150\text{cm/s}} \cdot \text{Time}$$

Program: 3.3sec